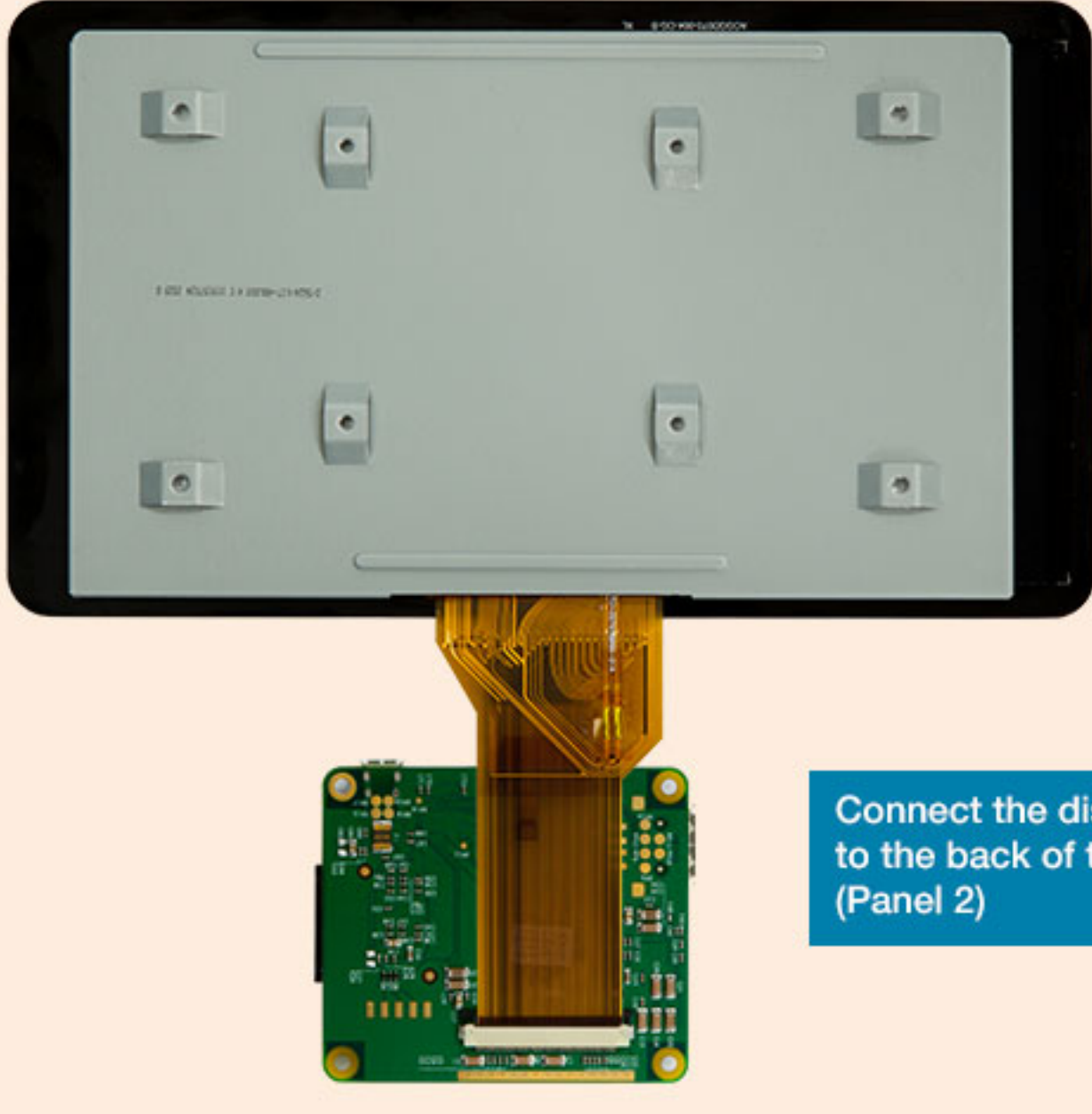


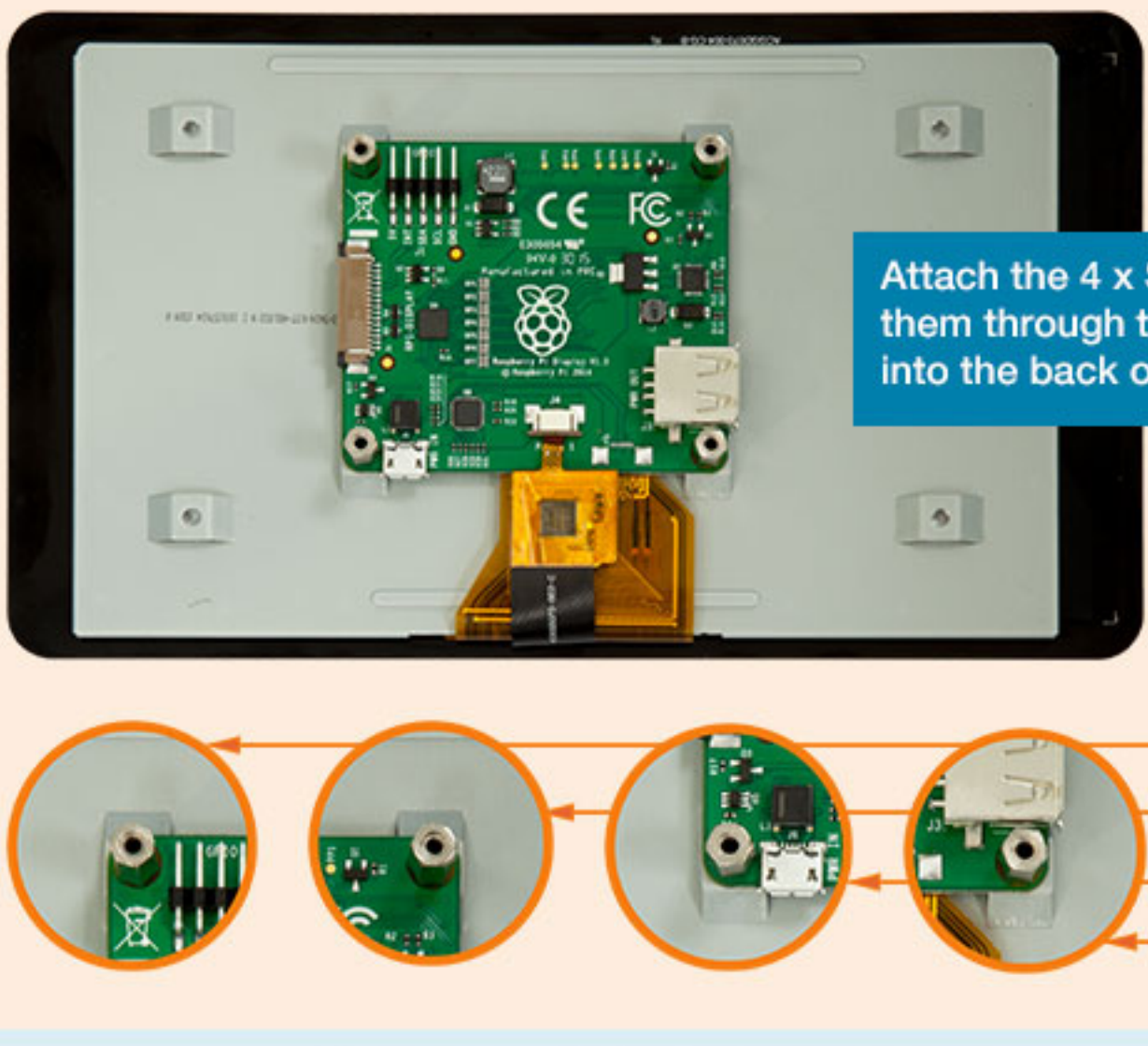
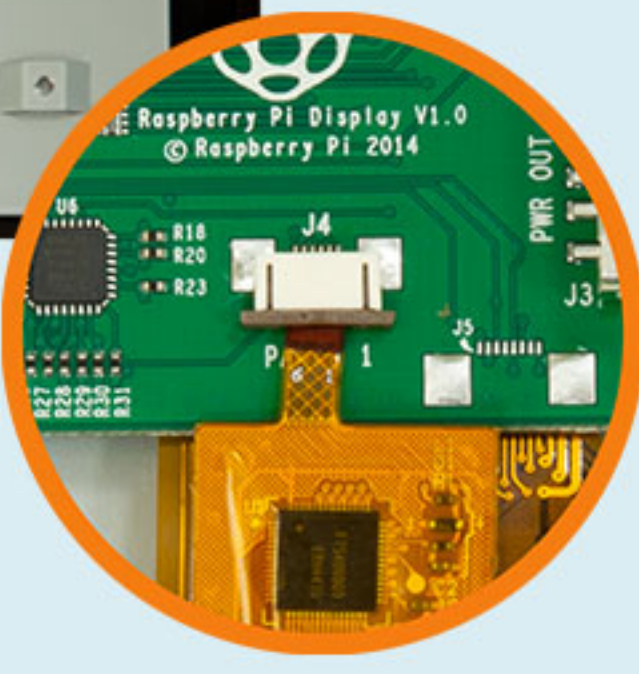
- Parts List**
- 1. 7" Touch screen display
 - 2. Display ribbon cable
 - 3. 4 x jumper wires
 - 4. 4 x stand-offs
 - 5. 4 x screws
 - 6. Adapter board



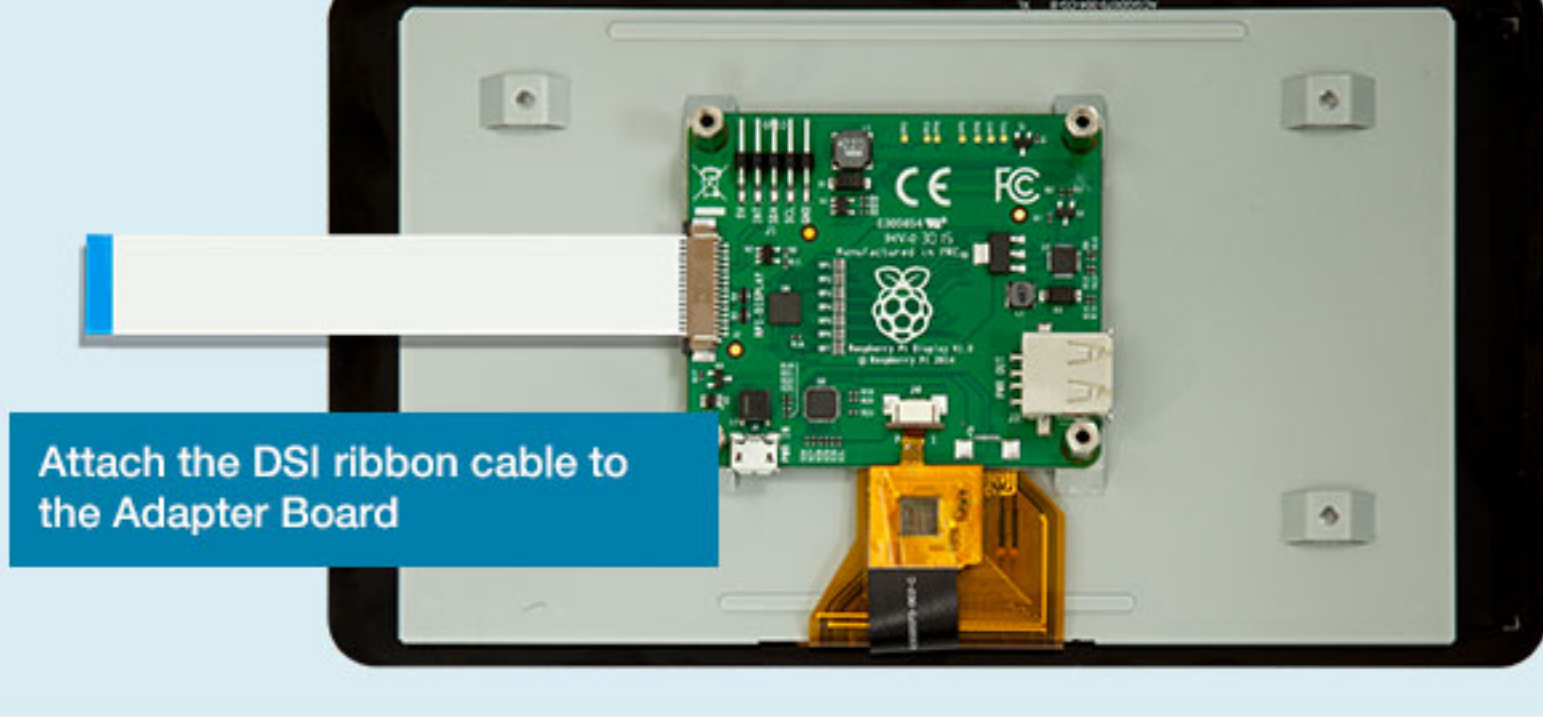
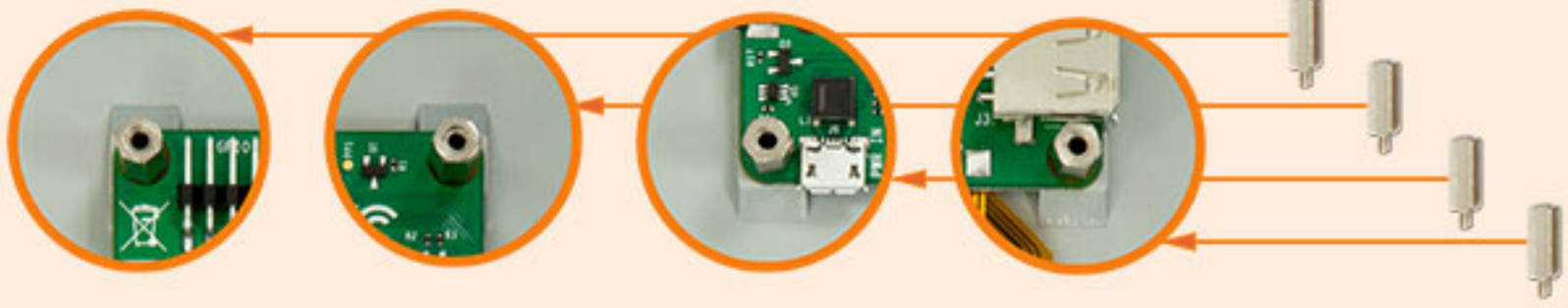
Connect the display ribbon cable to the back of the adapter board (Panel 2)



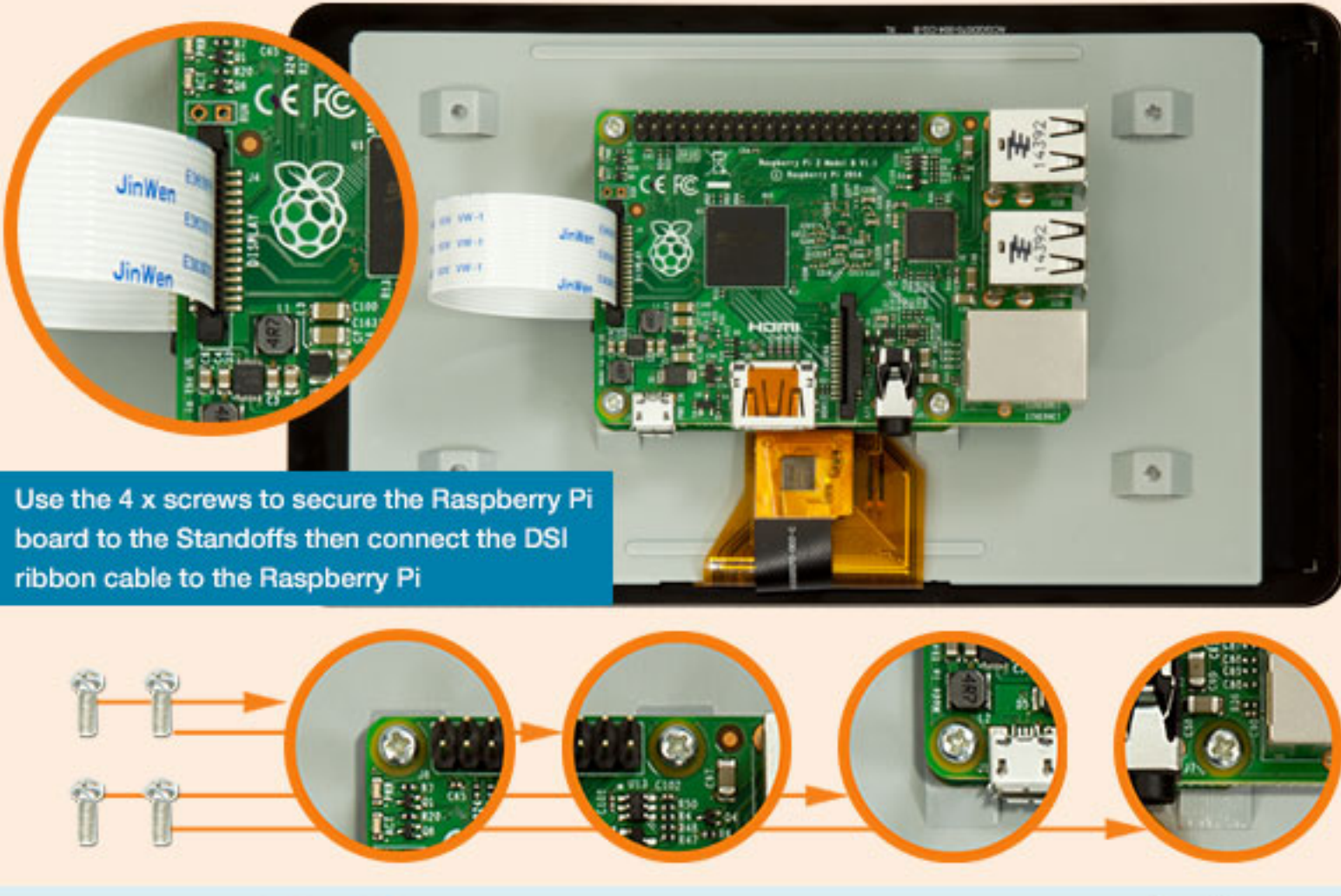
Lie the adapter board onto the back of the display then connect the touch screen ribbon cable into J4 (Panel 1)



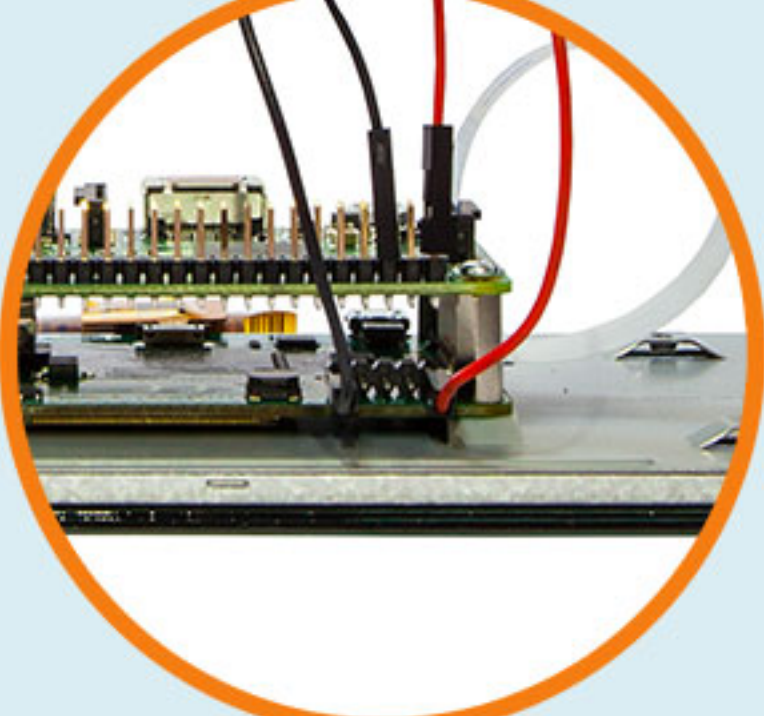
Attach the 4 x Standoffs & screw them through the adapter board into the back of the display



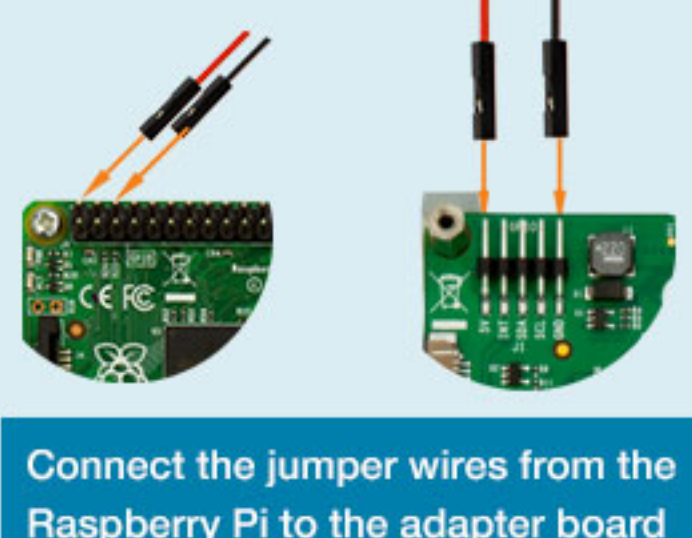
Attach the DSI ribbon cable to the Adapter Board



Use the 4 x screws to secure the Raspberry Pi board to the Standoffs then connect the DSI ribbon cable to the Raspberry Pi



Insert a Micro SD Card into the Raspberry Pi with the Latest version of Raspbian installed then attach a 2Amp Power Supply to the Raspberry Pi Adapter Board to power the display and Raspberry Pi Board.



Connect the jumper wires from the Raspberry Pi to the adapter board



Operating Software:
 Now that you've assembled your Raspberry Pi Touchscreen Display, you will need to download and install the latest version of the Raspbian Operating System - available to download from the Raspberry Pi Foundation at: <https://www.raspberrypi.org/downloads/>

Once installed, type `sudo apt-get update` and `sudo apt-get upgrade` (in that order) to install all of the latest Drivers and software to support the Touchscreen Display.

